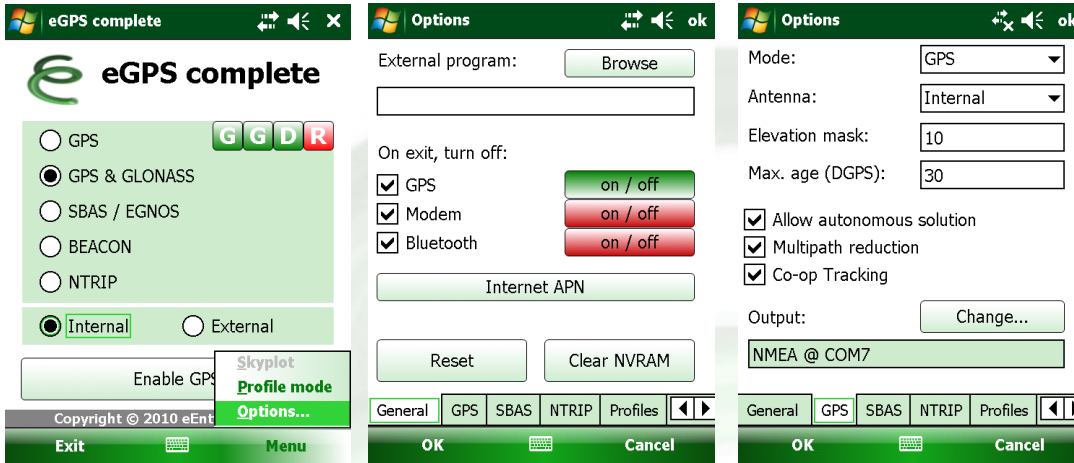


## eGPS configuration

Before using eGPS please review the available settings by going to Menu → Options:



On the “**General**”-tab select the external program that should start up after eGPS is enabled.

Note you also have the possibility to choose whether GPS, Modem or Bluetooth to be turned off when exiting the program. By using the **on/off** buttons you are able to turn them on or off individually (status shown by a green or red colour).

The “**Internet APN**” option allows you to assign the access data for an internet connection (you should use this if the GRS-1 has never before established a internet connection ~ e.g. using TPS connection manager).

Note the options to either Reset the receiver board or clear the board’s NVRAM.

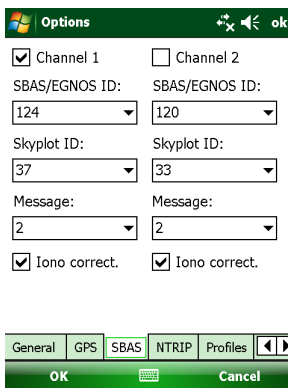
The “**GPS**” tab allows you to find settings how the board should be initialized, which output format and output port should be used.

Note: NMEA basic includes GGA messages only;



NMEA includes the whole range of NMEA messages;

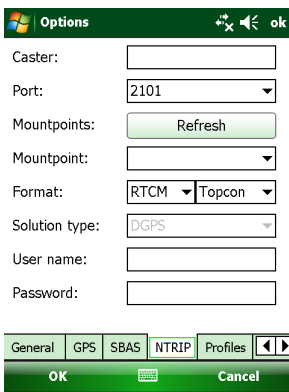
NMEA & TPS is designed for advanced users e.g. customers using ArcPad & eTopPlus



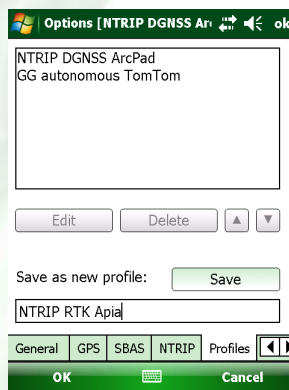
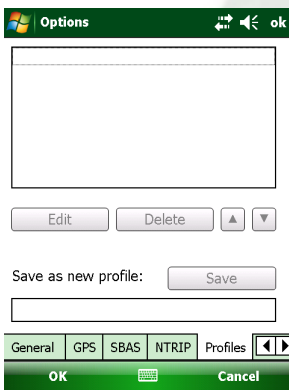
On the “**SBAS**”-tab select appropriate settings for the SBAS satellites to be used.

### eGPS Configuration



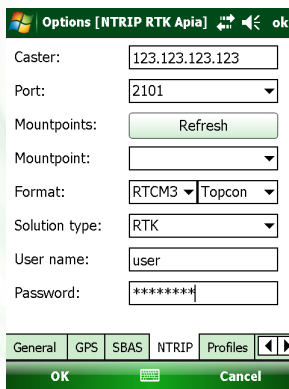
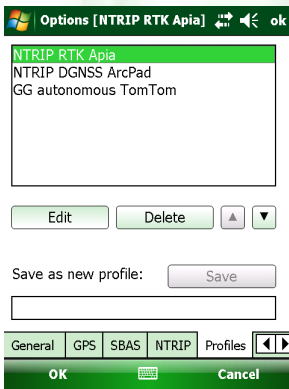


On the “NTRIP”-tab make edits for your NTRIP reference network:  
*Caster* = IP address of the network service  
*Port* = used Port  
*Mountpoints* = press “Update” to get a list of Mountpoints from the network, select the desired one  
*Format* = select the RTCM message type format and if it is a Topcon, Trimble or Leica network  
*solution type* = DGPS, RTK, etc  
*username* = your username for the login  
*password* = your password for the login

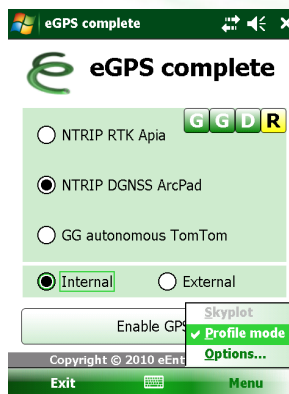
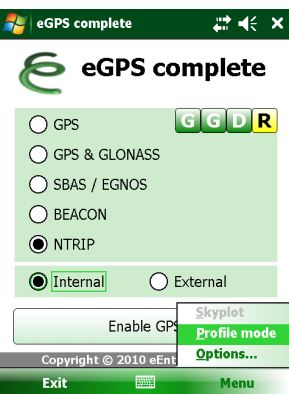


On the “Profile”-tab you are able to create different profiles which will appear on the opening screen of eGPS. This allows you to create easy to use 'short cuts' and you don't have to change the settings all the time if you want to work in different configurations.

Create new empty profiles by saving them under a specific and easy identifiable name.



Select the profile that you want to edit and press “Edit”. The profile that you are making changes in is shown in brackets all the time on top of the screen. After you have made all necessary changes press OK or select the next profile you want to edit and proceed as above.



Press “Ok” on the bottom left and you get back to the opening screen of eGPS.  
 Press Menu → Profile to enable the profile mode

### eGPS Configuration